

City of Frederick, Maryland

2014–2015

**Population boom has Frederick, Maryland
seeking sustainable path forward**

Program Details

**Partnership for
Action Learning in
Sustainability (PALS)**

University of Maryland
1112 Preinkert Field House
Building 054
College Park, MD 20742

umdsmartgrowth.org



A university partnership gave Frederick assets to help improve its downtown

Frederick, Frederick
County, Maryland,
United States

Community Size:
2017: 71,408

Status: Completed

Frederick, Maryland is the second largest city in the state, and also the fastest growing area in the region. In 2010, for example, the population was nearly 66,000 people; was projected to grow 15 percent to 76,000 people by 2022, according to the city.

But like any area where the population is accelerating, there are growing pains. Country-wide, more than 35,000 households in the county, or 39 percent of total households, struggle to afford housing, food, transportation, child care and health care. There are also environmental concerns: The city recently completed a \$45 million upgrade of its wastewater treatment plant after finding it was not compliant with the federal Clean Water Act.

To continue to address these challenges, the city joined with the University of Maryland's Partnership for Action Learning in Sustainability (PALS) in 2014-2015 to provide analysis ranging from the impact of climate change on the City's watershed to engaging low-income and minority communities in efforts to reclaim abandoned properties. As part of the Educational Partnerships for Innovation in Communities (EPIC-N) Network, PALS brought in about 350 students who worked on 30 projects that covered planning and development, energy and the environment, and social issues.

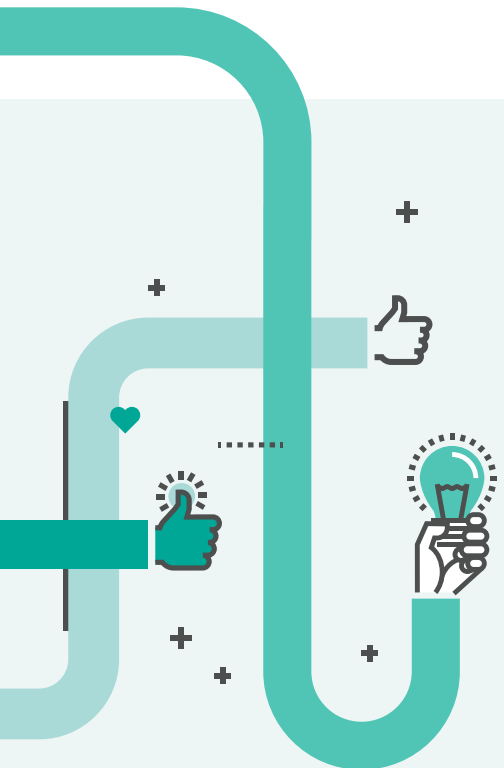


Frederick gets reports to improve accessibility, protect environment

Frederick received architecture, landscape, and real estate development models to equitably utilize the city's downtown and abandoned property around the city. They included:

- **Architectural tour plan** that can be utilized by lead tourists to discover Frederick's oldest buildings.
- **Shared use study** to the nearby Carroll Creek floodplain for use to implement a path trail network for bikes and walking trails.
- **Study to improve neighborhood** identification using GIS mapping and online surveys.
- **Mapping analysis to improve accessibility** between downtown and surrounding neighborhoods.
- **Report to explore adaptive reuse** of an abandoned site for an "art-centric 120 key hotel."
- **Proposal to build a Marriott hotel** and conference center in downtown.
- **Project that explores ways to increase revenue** at local airport.
- **Invasive species survey** at Frederick City Watershed.
- **Studies to reimagine downtown** retail corridors.

The plans helped lead paths forward in reviving the city's economy, strengthening its environmental assets, and making the city more accessible and welcoming to, not just residents, but to others visiting or interested in relocating there.



“PALS has been a great partnership and has provided invaluable information for our City — we’ll be able to use it for a long time coming.”

— Randy McClement, Mayor, City of Frederick, MD



25

Classes



350

Students



50,000

Hours



8

Disciplines



30

Projects



16

Faculty
Members

***The University of
Maryland provided the
city with “the best bang
for our buck.”***

— Kelly Russell, Alderman, City of Frederick

Contact Us

info@epicn.org
epicn.org

PO Box 44069
Madison, WI 53744-4069